

Clinical Group Briefing

Transforming the future at North Manchester General Hospital

June 2026

Inside



- RIBA Stage 1 and Massing & Stacking engagement
- Recruitment
- Contractor announced
- June priorities

Key messages

RIBA Stage 1 (main acute hospital)

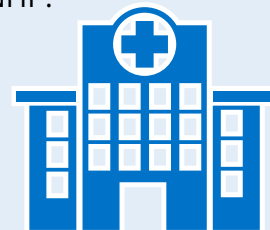
- The NMGH New Hospital Project commenced RIBA Stage 1 on 27th April 2026 for the main acute hospital.
- Our design team have developed early design proposals aligned to Hospital 2.0 and NHP. We are engaging with teams on these through the Massing and Stacking engagement sessions.

New Hospital Project Recruitment

- The New Hospital Project team continues to grow, with new roles being recruited at pace as the programme moves into an exciting new phase of design and delivery.
- Welcoming new colleagues into the team is helping to build capacity and skills, strengthening how we work together across the programme and to support delivery against the plan. A nursing lead role and an operational lead role are due to be advertised soon.

Outpatients building

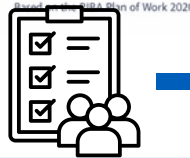
- To support the development of the standalone outpatient building, a design group has been established with representatives from the clinical groups providing outpatient services on the NMGH site. This group will meet on a bi-weekly basis to guide the design and commissioning of the new building.
- RIBA Stage 1 for the new Outpatient Building is planned to commence in June 2026.
- The Trust will lead the design for this building, working in collaboration with NHP.



Contractor announcement

The proposed delivery partner for North Manchester General Hospital has been announced as Bovis. This remains subject to the necessary approvals and contractual processes later this year. We will keep you updated as plans develop.





Key topics

Massing and Stacking Engagement (main acute hospital)

- The first Massing and Stacking engagement session was held on Wednesday 3 June 2026, 10.30 – 12.00 with service representatives nominated by Clinical Groups.
- The session focused on introducing the Hospital 2.0 principles and their implications in translating the Schedule of Accommodation (SoA) into the draft Massing and Stacking plan. The draft Massing and Stacking plan was then presented, giving an overview of departmental locations, adjacencies, and building access routes.
- We had good attendance (80+ attendees) with each Clinical Group represented and several clinical and operational leads participating.
- Attendees were asked for their initial high-level feedback on the overall layout of the new hospital, as well as feedback on the location of their department or clinical service where identifiable. The snapshot from attendees is shown below:



- The key output was for attendees to log questions for specific services via the form below, which will be open until **close of business on June 12th**. These will be reviewed and responded to as needed, with meetings arranged with specific services or departments where several questions have been raised.
- [NMGH RIBA 1 Massing & Stacking Engagement Session - Question Submission](#)



Engagement

Massing & Stacking Engagement dates

- A second session is planned for Wednesday 1st July 2026, 13.30 - 14.30. This will provide a Massing and Stacking plan update, reflecting completion of joint development work with the national NHP team.
- All nominated representatives were asked to attend both engagement sessions to ensure consistency.
- We request that invitations are not forwarded but please contact the project team if the nominated triumvirate representatives need to be updated.

Massing and Stacking Scope

It is helpful to understand what is in scope for the Massing and Stacking phase

In Scope:

- ▶ High-level arrangement of services based on the agreed SoA
- ▶ Hospital 2.0 adjacencies and planning rules
- ▶ Whole-hospital spatial relationships and feasibility
- ▶ Strategic collaboration with the NHP design team

Out of scope

- ▶ Detailed layouts or room design
- ▶ Final service locations
- ▶ Full resolution of SoA challenges
- ▶ Detailed operational workflows



“Massing and stacking” is where the team decides the overall size and shape of the building (massing), and where departments and services will sit within it (stacking), both across the site and on different floors.



“Schedule of Accommodation” is a detailed list of all the rooms and spaces a building needs, including what they’re for and how big they are.

June priorities



- Massing and Stacking group engagement sessions (main acute hospital) and follow up meetings with specific services.
- Development of the Massing and Stacking plan with the national New Hospital Project.
- Recruitment to the NMGH New Hospital Project team – shortlisting and interviewing for advertised roles.
- Initiation of RIBA stage 1 for the Outpatient Building.

Key messages to share

These messages are to share with all colleagues in Design or TOM groups and in your regular CG team updates to Divisional leaders

- Thank you for your continued engagement which is helping to shape the new hospital. Your expertise is valued.
- We are in RIBA Stage 1. This is an important milestone for the New Hospital Project and achieved through the collaboration and effort of many teams and individuals.
- We are following a ‘Preferred Route Forward’ of building a main acute and standalone outpatients building as one integrated project.
- The building contractor has been announced as Bovis, subject to contracts being signed in Summer.