



CSS Team Brief

We are safe and healthy





Clinical & Scientific Services
Manchester University
NHS Foundation Trust

Today

- Welcome and introduce theme
- Updates
- Highlights
- **Have your say**
- Future Team Brief dates



We are
safe and
healthy



Clinical & Scientific Services
Manchester University
NHS Foundation Trust



Gareth Adams
Chief Executive



Zara Pain
Director of HR
and OD and
Deputy Chief
Executive



Sarah O'Shea
Medical Director



Alison Olivant
Interim Chief
Operating
Officer



Chris Evans
Director of
Finance



Charlotte Skitterall
Group Chief
Pharmacist

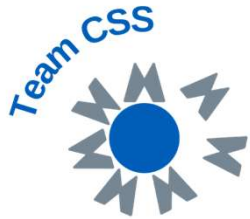


**Sarah
Ingleby**
Director of
Nursing and
Healthcare
Professions



Clinical & Scientific Services
Manchester University
NHS Foundation Trust

Updates



Celebrations

- World hand hygiene day – 5th May
- International Nurses Day – 12th May
- National Day for Staff Networks – 14th May
- International HR Day – 20th May



Women's Staff Network Discovery Event

Are you interested in shaping a supportive and empowering space for women at MFT? This event is your chance to connect with colleagues, share experiences, and discuss key workplace topics that matter to women. Together, we will explore the possibilities of establishing a Women's Staff Network and how we can make a positive impact. Don't miss this opportunity to be part of the conversation!

Whats on:

- Lunch and networking
- Activities and workshops
- Keynote speakers from across the Trust
- Discussion about launching a Women's Staff Network

Register your interest here:



Who:

All staff are welcome to attend. Places are limited at the venue, so please register soon! If you can't attend after registering, please contact equality@mft.nhs.uk to cancel your registration.



When:

Tuesday, 13 May 2025,
11:30 - 3:30pm



Where:

Citylabs 1, Conference rooms 1 and 2,
Nelson St, Manchester, M13 9NQ



Diversity Matters



Manchester University
NHS Foundation Trust

Face to Face **SCHWARTZ ROUND**

Thursday 24th April 2025

12:15 – 1.30 pm

Seminar Rooms A&B

5th Floor RMCH



Seating will be spread out and staff attending will be able to grab a lunch bag at 12:15pm before the start of the session.

ALL STAFF are welcome.

**‘Being on the Other Side;
experiences of receiving healthcare’**

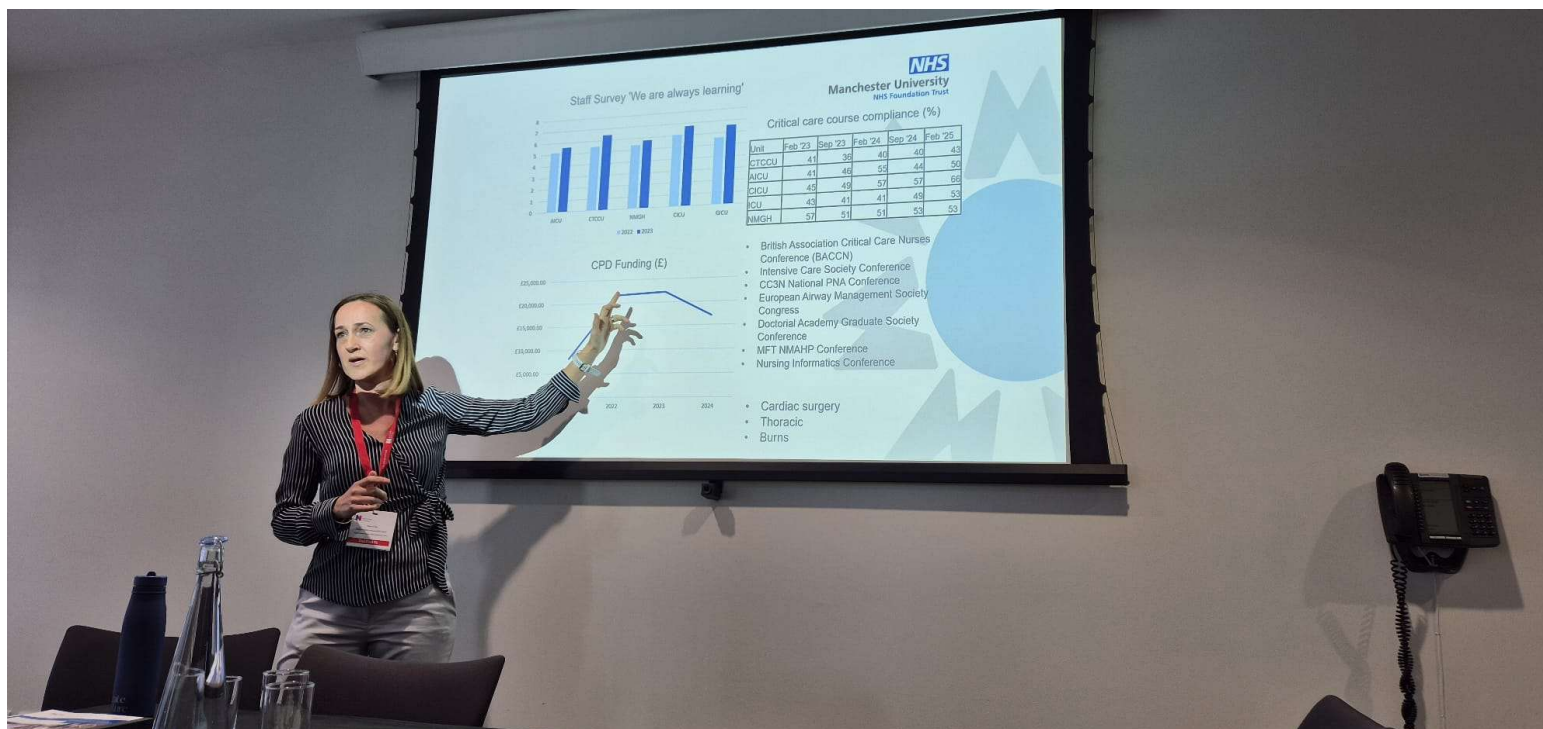


Clinical & Scientific Services
Manchester University
NHS Foundation Trust

Highlights



Alice Shaw presents at the Glasgow RCN education conference





Mel wins a GEM Award!





Clinical & Scientific Services
Manchester University
NHS Foundation Trust

Shout Outs!



2330
Shout Outs
in 2024

79
Shout outs
in April
2025

733
Shout outs
So far in
2025



Bee Brilliant



Clinical & Scientific Services

Manchester University

NHS Foundation Trust



**CSS STAR
AWARDS**



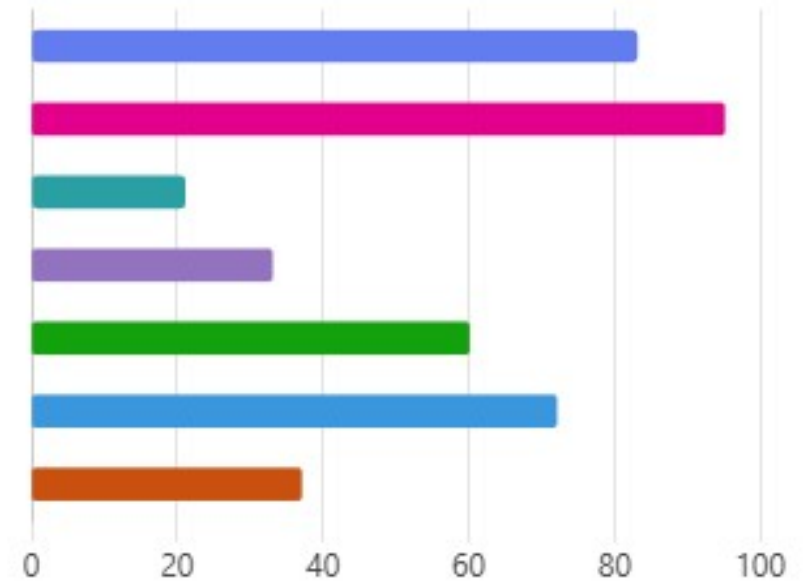
Clinical & Scientific Services
Manchester University
NHS Foundation Trust

**5xx nominations
received this year!**



Divisional Update

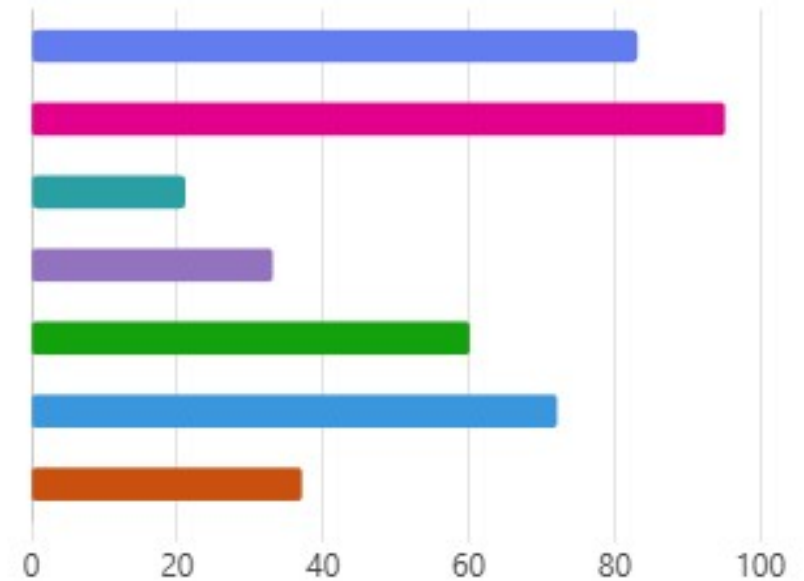
● Anaestheisa, Critical Care & Perioperative Care	83
● Allied Health Professionals	95
● Corporate (including Infection Prevention & Control and Tissue Viability)	21
● Imaging	33
● Laboratory Medicine	60
● Pharmacy	72
● Other (CDC, Hospitals/MCS)	37





Category Update

● Anaesthesia, Critical Care & Perioperative Care	83
● Allied Health Professionals	95
● Corporate (including Infection Prevention & Control and Tissue Viability)	21
● Imaging	33
● Laboratory Medicine	60
● Pharmacy	72
● Other (CDC, Hospitals/MCS)	37



**CSS STAR
AWARDS**



Clinical & Scientific Services
Manchester University
NHS Foundation Trust

**The shortlisting is now
being done...**

**Thank you to everyone that
nominated!**



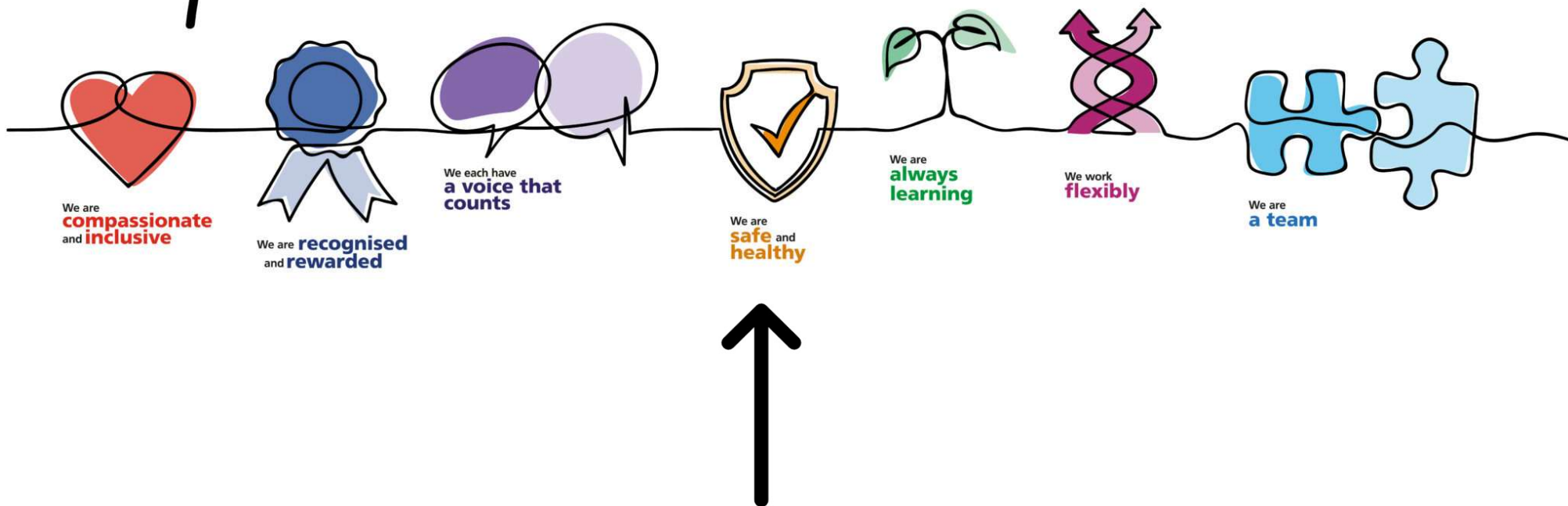


Clinical & Scientific Services
Manchester University
NHS Foundation Trust

This month's theme



People Promise





We are safe and healthy

The questions linked to this theme cover:

- Health and Safety Climate 5.25 ↑
- Burnout 4.94 ↑
- Negative Experiences 7.99 ↑

CSS 2024 Score – 6.06

CSS 2023 Score – 5.99



MFT 2024 Score – 6.14



People Promise

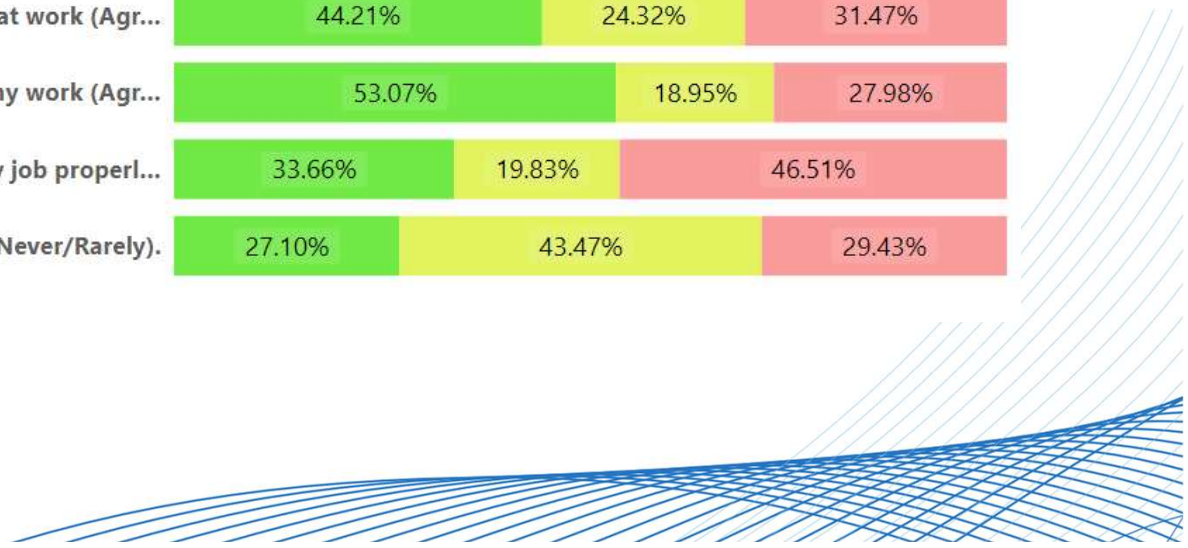
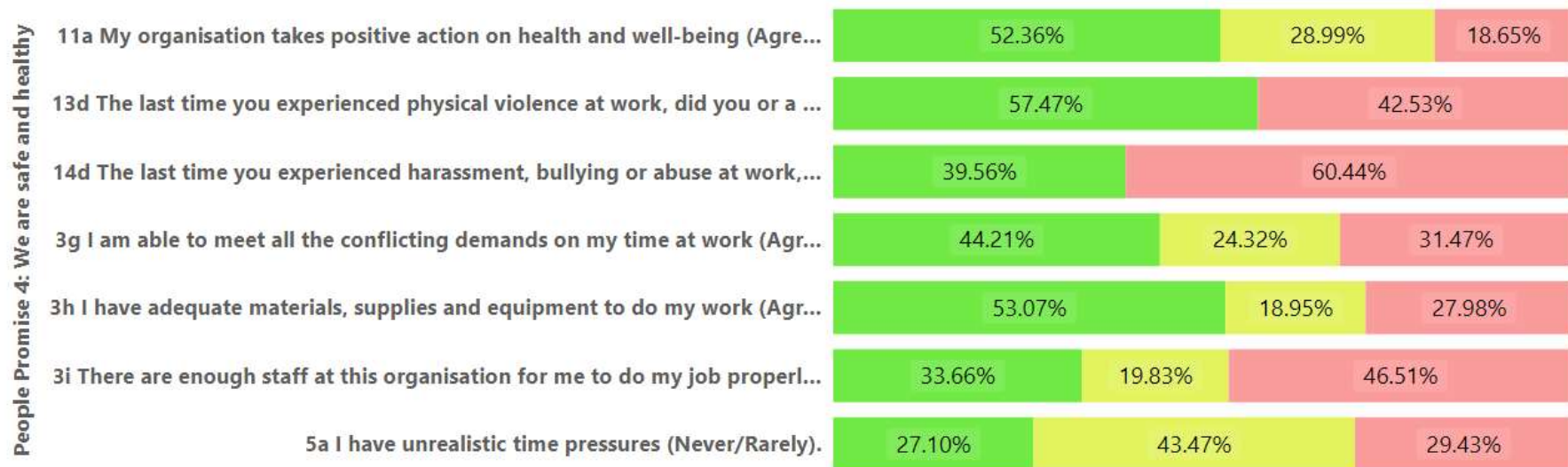
We are
safe and
healthy



We are safe and healthy

Health and Safety Climate

● Positive Score ● Neutral Score ● Negative Score



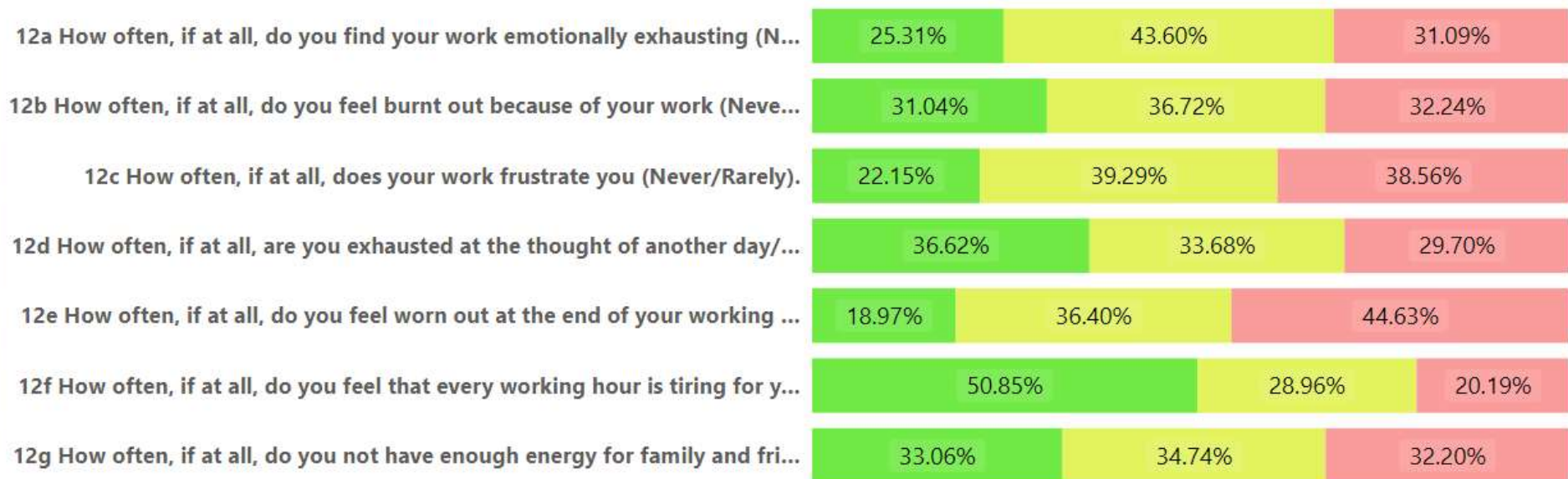


We are safe and healthy

Burnout

● Positive Score ● Neutral Score ● Negative Score

People Promise 4: We are safe and healthy





We are safe and healthy

Negative experiences

● Positive Score ● Neutral Score ● Negative Score

People Promise 4: We are safe and healthy



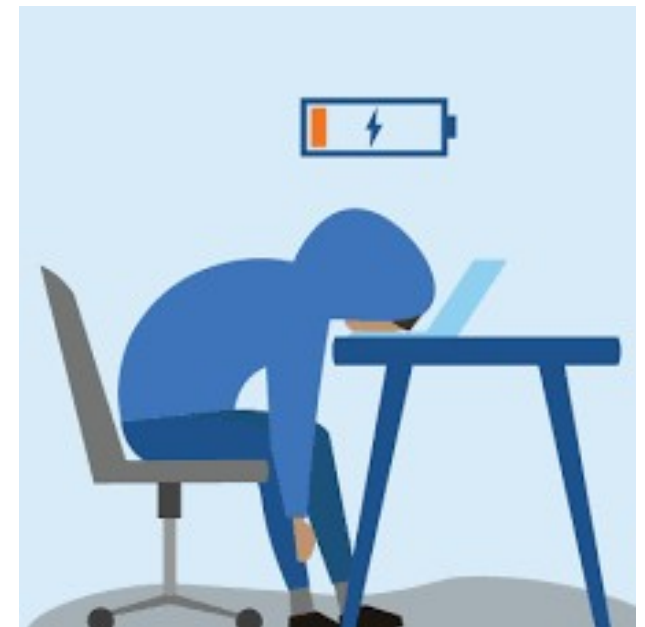


Connection and community

The negative outcomes of burnout are alarming.

Those who experience burnout are:

- 63% more likely to take a sick day
- 23% more likely to visit A&E
- More than twice as likely to be actively seeking a different job





Wellbeing support – linked to burnout

Lime Arts – Create+

- Group A - Tuesday 10th June – 15th July. Every Tuesday 10:00-12:30.
- Group B - Wednesday 11th June – 16th July. Every Wednesday 10:00-12:30.
- Group C Thursday 12th June – 17th July. Every Thursday 10:00-12:30pm.





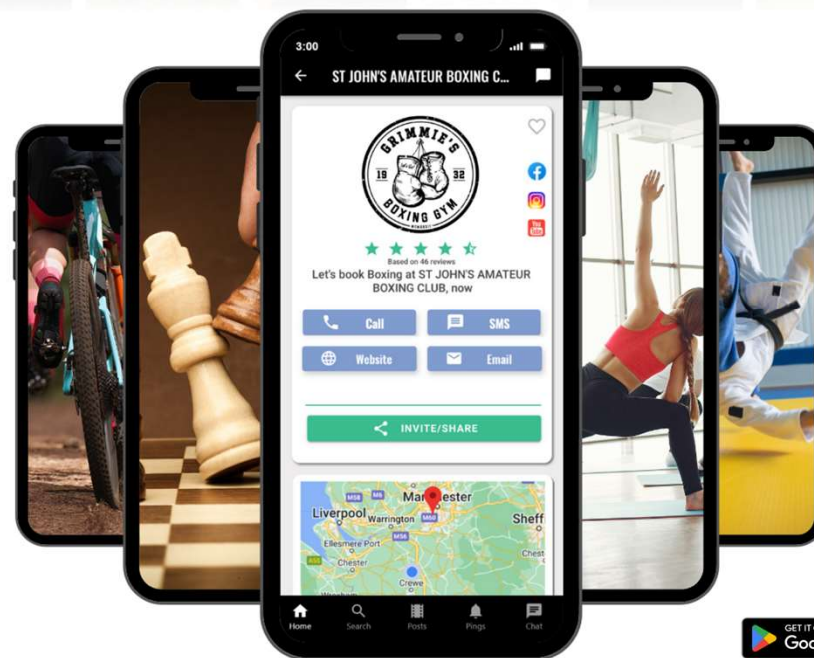
Hobby Health

Staff Hobby **Groups** across the MFT.

Connect with staff who share the same interests and passions.

Discover 100's of **local** hobbies across 1000's of sites in Greater Manchester.

Free classes, workshops and offers.



SCAN & Download 



+ MFT ACCESS CODE
mftNHS2090!



Questions – Menti

What does burn out mean to me

What causes burn for you?

How can we support you to prevent burn out
in the first?



Follow us on X / Twitter



@MFT_CSS



Clinical & Scientific Services

Manchester University

NHS Foundation Trust

**thank
you**